



Production of Aluminium, Bronze and Copper
in Powder, Paste and Granules

TECHNICAL DATA SHEET

revision n°: 01 (date 1-6-2017), supersedes n°- (date -) **Ident. N°:** AVL_TDS_S_EN_APACBR_AM4_DEG4A_70_v01

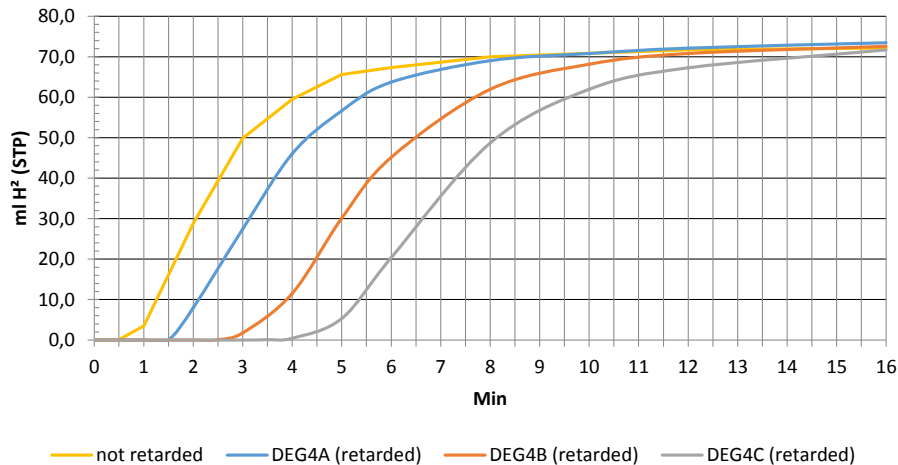
PRODUCT TYPE: ALUMINIUM PASTE for LIGHTWEIGHT CONCRETE with retarded reaction

PRODUCT NAME: AM4/DEG4A/70-30

PRODUCT DESCRIPTION: Flake Metal Paste for lightweight concrete based on Aluminium with diethylene glycol

Inspection Criteria	Unit	Lower lim. Value	Upper lim. Value	Test method
inspection criteria marked * are based upon powder analysis				
Purity of metal	%	99	-	
Particle Size Distribution				
D10*	µm	10	14	laser diffraction by Sympatec HELOS (dry)
D50*	µm	37	43	laser diffraction by Sympatec HELOS (dry)
D90*	µm	85	115	laser diffraction by Sympatec HELOS (dry)
Apparent density	g/cm ³	0,4	0,8	ASTM B212-99
Pigment content	%	67	72	LCI.003.0
Solvent content	%	28	33	LCI.003.0
Specific surface*	cm ² /g	8000	12000	LCI.004.0

Comparative overview of the calcium hydroxide reactivity (STP) of the different aluminium pastes for lightweight concrete with retarded reaction.



For more information and samples, please contact:

AVL METAL POWDERS nv, Elleboogstraat 7, B-8500 Kortrijk, Belgium, Europe

T +32 (0) 56 22 00 21 - F +32 (0) 56 22 64 14

e-mail: sales@avlmetalpowders.com

website: <http://www.avlmetalpowders.com>

VAT BE 0405.375.371 - HR 7 Kortrijk



Please consult AVL website /GENERAL INFO at www.avlmetalpowders.com for additional information on our products related to shelf life and storage recommendations .

All data on this technical data sheet are based upon tests and knowledge which our company believes to be currently reliable. Foregoing data is no legal guarantee for specific properties of the product, nor for their suitability for a particular application or process, the liability lies with the buyer. AVL Metal Powders has the right at any time to alter any product data as a result of technical improvements or changes in the manufacturing process.

depart. Name: QC, Stefaan De Forche